



Thank you for purchasing our product. Before installing/operating the product, read the instructions carefully and retain them for future reference.

⚠ Attention!

- For installation, follow the steps described. Any damage caused by wrong installation shall be imputed to the users.
- To avoid a short circuit from occurring do not pull or modify the wires during installation.
- Do not disassemble or change any parts. Opening and disassembling this unit will void any warranty.
- Maintenance and repairs should be executed by our professionals only.

Symbol description:

NOTE

⚠ Some procedures must be followed to avoid damages to the product.

⚠ **WARNING!** Certain procedure must be followed to avoid damages to yourself, to the vehicle or to others.



Flash



Light on



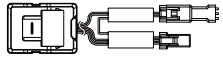
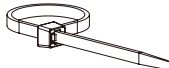


Hold the Button
1 second

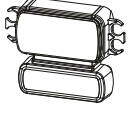
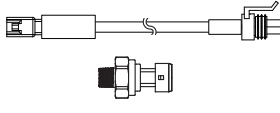
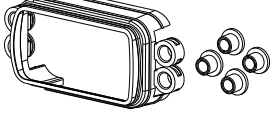
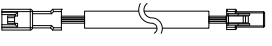


Hold the Button
3 seconds

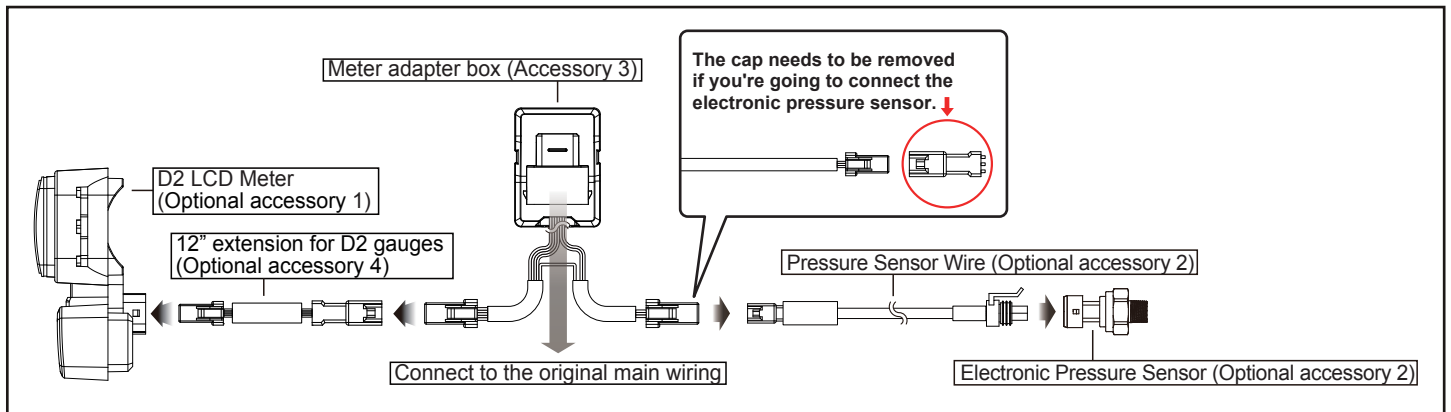
1-1 Accessories

<p>1 Fuel Level Meter X1</p> 	<p>2 Oil Temp. Meter X1</p> 	<p>3 Meter adapter box X1</p> 	<p>4 Zip tie (4.6x300 mm) X1</p> 
---	--	--	---

1-2 Optional accessories

<p>1 D2 LCD Meter</p> 	<p>2 Air pressure sensor kit 180 cm x1 (part# BZ012000)</p> 	<p>3 D2 rubber gasket with bushings x1 (part# BZ080000)</p> 	<p>4 12" extension for D2 gauges x1 (part# 20-A91803A)</p> 
--	--	---	---

2-1 Wiring installation instructions



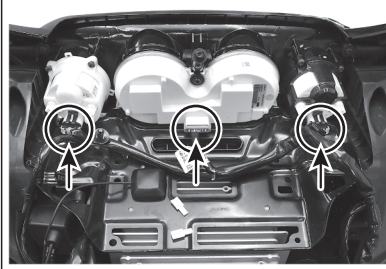
2-2 Disassembling Instructions



1. Disconnect the ground (-) (negative pole of the battery) from the vehicle's battery.
2. Remove the mounting screw and remove the fairing.



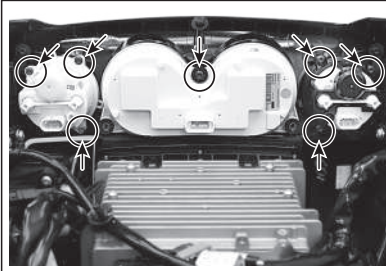
5. Ensure the Speed and Tach bezels remain in the fairing.



3. Disconnect the 3 gauges.



6. The Fuel and Volt bezels and mounting cups will be reused. There are 3 tabs on the bezels that need to be carefully pushed back through the mounting cup to separate the bezel from the mounting cup and to release the factory gauge.

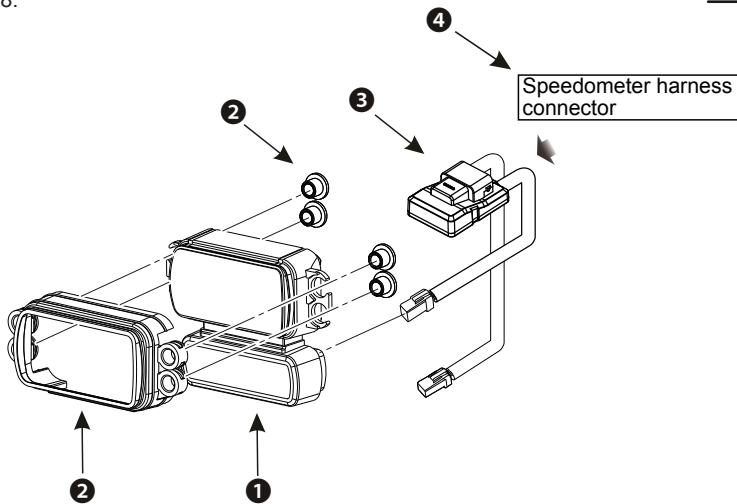


4. Remove the remaining 7 screws.



7. The new OIL TEMP gauge will use the existing white Volt mounting cup and the new Fuel Level gauge will use the existing black Fuel mounting cup. Place the new VOLT and OIL TEMP gauge in the appropriate housings and secure the bezel in place by lining up the tabs.

8.



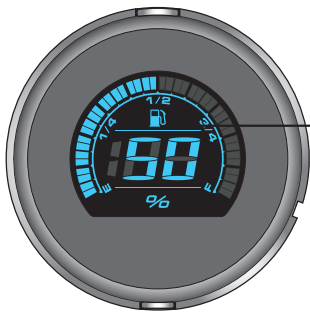
- ❶ D2 LCD Meter (Optional accessory 1)
- ❷ D2 rubber gasket with bushings (Optional accessory 3)
- ❸ Meter adapter box (Accessory 3)
- ❹ Speedometer harness connector
-(from original supplier)

NOTE Use the zip tie (Accessory 4) to fix the meter adapter box in place.

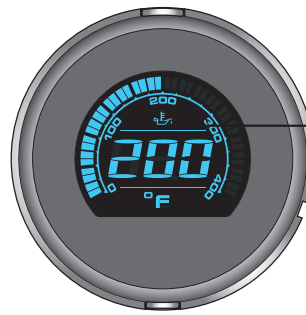
NOTE Installation may require rubber gasket with bushings (Optional accessory 3)

*To access settings on CVO models, you must turn ON the run/stop switch so that the bike will not turn off. Then you can make your adjustments to the settings on the gauge.

3-1 Overview



Fuel meter
 ●Display range : 0 ~ 100 %
 ●Display unit : 1 %



Oil temp. meter
 ●Display range : 0 ~ 400 °F (32 ~ 248 °C)
 ●Display range : 1 °F (1 °C)
Oil temp. warning
 ●Setting range : 140 ~ 400 °F (60 ~ 250 °C)
 ●Setting unit : 1 °F (1 °C)
Engine temperature
 ●Display range : -40 ~ 300 °C (-40 ~ 572 °F)

NOTE It will switch to engine temperature if the temperature sensor is not installed.

3-2 Features and settings description

●Fuel meter	Display range : 0~100 % Display unit : 1 %	○Backlight color	Setting range : white, red, orange, yellow, green, blue, light blue, purple
●Oil temp. meter	Display range : 0 ~ 400 °F (32 ~ 248 °C) Display unit : 1 °F (1 °C)	●Operating voltage	DC 12 V
●Oil temp. warning	Setting range : 140 ~ 400 °F (60 ~ 250 °C) Setting unit : 1 °F (1 °C)	●Operating temperature	-10 ~ 60 °C
●Engine temperature	Display range : -40 ~ 300 °C (-40 ~ 572 °F) Display unit : 1 °F (1 °C)	○Storage temperature	-20 ~ 80 °C
●Backlight brightness	Setting range : 1 / 5(darkest) ~ 5 / 5(brightest)	●Specifications	JIS D 0203 (S2)
		●Meter Weight-Oil Temp.	81 grams
		●Meter Weight-Fuel Level	81 grams

NOTE Design and specification may change without further notice.

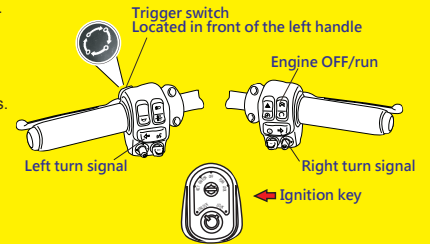
3-3 Application list



Scan QR code for the application list.

* To enter the gauge settings mode, you must follow the steps below:

- 1 : The key must be switched to ON/Accessories.
- 2 : Engine OFF/run switch must be OFF.
- 3 : Meter must be displaying ODOMETER.
- 4 : Hold both turn signal switches for 3 seconds.
- 5 : Use trigger switch to navigate through settings.



4 Operation Setting



Scan or click on the QR code; please refer to the instruction BA080050.

5 Troubleshooting

The following situations do not indicate malfunctions of the product. Check the following before taking it in for repair.

Trouble	Check item	Trouble	Check item
The meter doesn't work when the power is on.	<ul style="list-style-type: none"> ●The power isn't supplied to the meter. <ul style="list-style-type: none"> →Make sure the wiring is connected. The wiring and fuse are not broken. →The battery is too old to supply needed power (DC 12 V). 	The meter shows wrong information.	<ul style="list-style-type: none"> ●Check the voltage of your battery, and make sure the voltage is over DC 12 V.

※ If the problems still cannot be solved, contact our technical department for assistance.