

# FRONT AXIAL TO RADIAL CALIPER MOUNTS

## INSTALLATION GUIDE

**DISCLAIMER:** Kraus Motor Co. recommends that you defer to a certified mechanic or technician on any installation when possible. Refer to your OEM service manual for procedure, step by step procedures, required tools and specifications to make sure all pieces and parts are properly installed. Kraus Motor Co. is not responsible for improper installation of any OEM or Kraus component/kit. After completing installation, go for a slow, careful test ride. Afterwards, double check all pieces, parts and systems. Improper installation may result in severe injury or death.

### TO BEGIN INSTALLATION...

**NOTE:** It is recommended to verify all components are correct and will fit each other before installation. Reference the Kraus Website for Caliper Spacer and Bolt Charts.

- \*Refer to Service Manual for removal\*
- \*Refer to Caliper Instructions for Assembly of the Caliper\*

- Bleed the brake fluid from OEM Front Calipers
- Remove the OEM Caliper from motorcycle [Fig. 1]
- Remove OEM Caliper Mount from fork legs (if applicable)
- Reuse original hardware to secure new Kraus Caliper Mount to fork legs  
**Torque to 25-35 ft-lbs (34-47 N-m)**  
**NOTE: 108mm will use a spacer on the lower mounting bolt.**

- Slide new caliper on rotor and verify spacing between caliper and mount [Fig. 2]

**NOTE:** Depending on rotor size, spacing will vary. Verify the correct hardware was purchased.

- Add the proper amount of spacers and snug the mounting bolts through the caliper and spacers into the mount

- Tighten caliper bolts to mount according to the correct hardware spec below

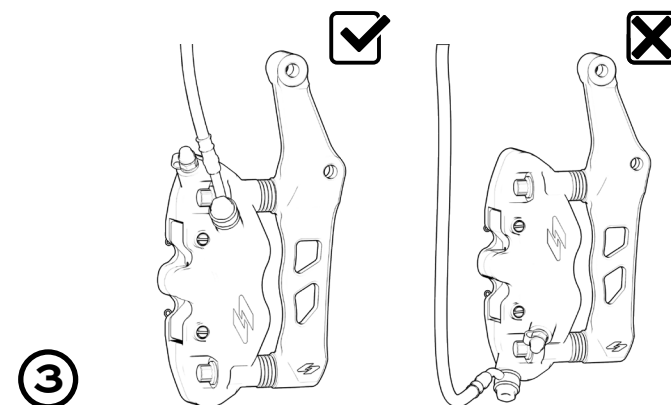
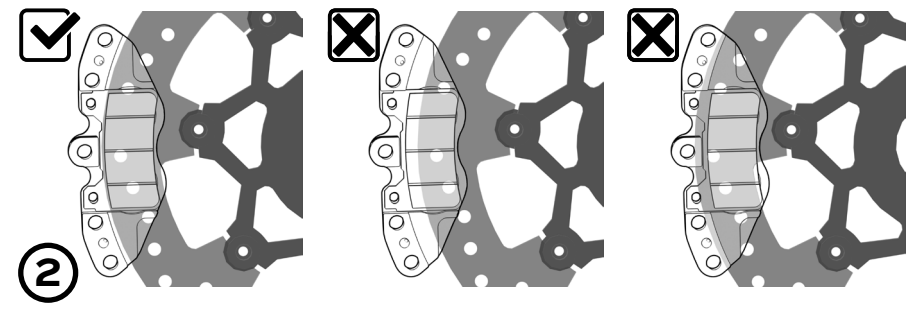
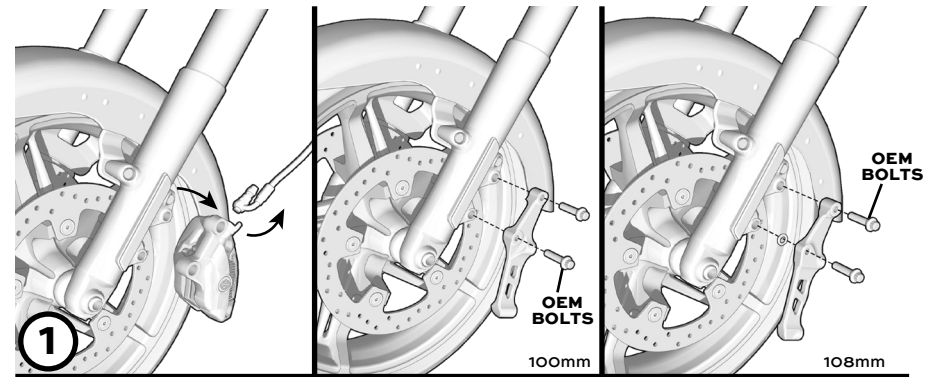
**Kraus Titanium Hardware - 38 ft-lbs (51 N-m)**  
**ARP Hardware - 38 ft-lbs (51 N-m)**  
**Stainless Steel - 24 ft-lbs (32 N-m)**

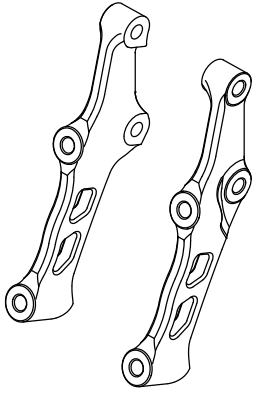
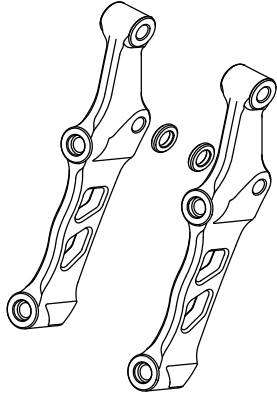
- Verify brake line length, then secure the banjo fitting and brake line to the caliper. [Fig. 3] **Torque to 20 ft-lbs (27 N-m)**

- Once the banjo fitting is torqued, you can now flush brake fluid through the new caliper

- Tighten bleeder screw when brake pressure feels comfortable

**Wipe clean and Installation is now complete!**



	
<p><b>100mm Calipers:</b></p>	<p><b>108mm Calipers:</b></p>
<p><b>OEM H-D Calipers</b>                  Donor Models: Pan America,                  Sportster S, CVO Touring w/                  Inverted Forks, LiveWire.</p>	<p><b>Kraus RT3</b></p>
	<p><b>Kraus RTX8</b></p>
	<p><b>Brembo .484</b></p>
	<p><b>Brembo M4</b></p>

