

APEX SS3 FOOT CONTROLS ST-FC-30

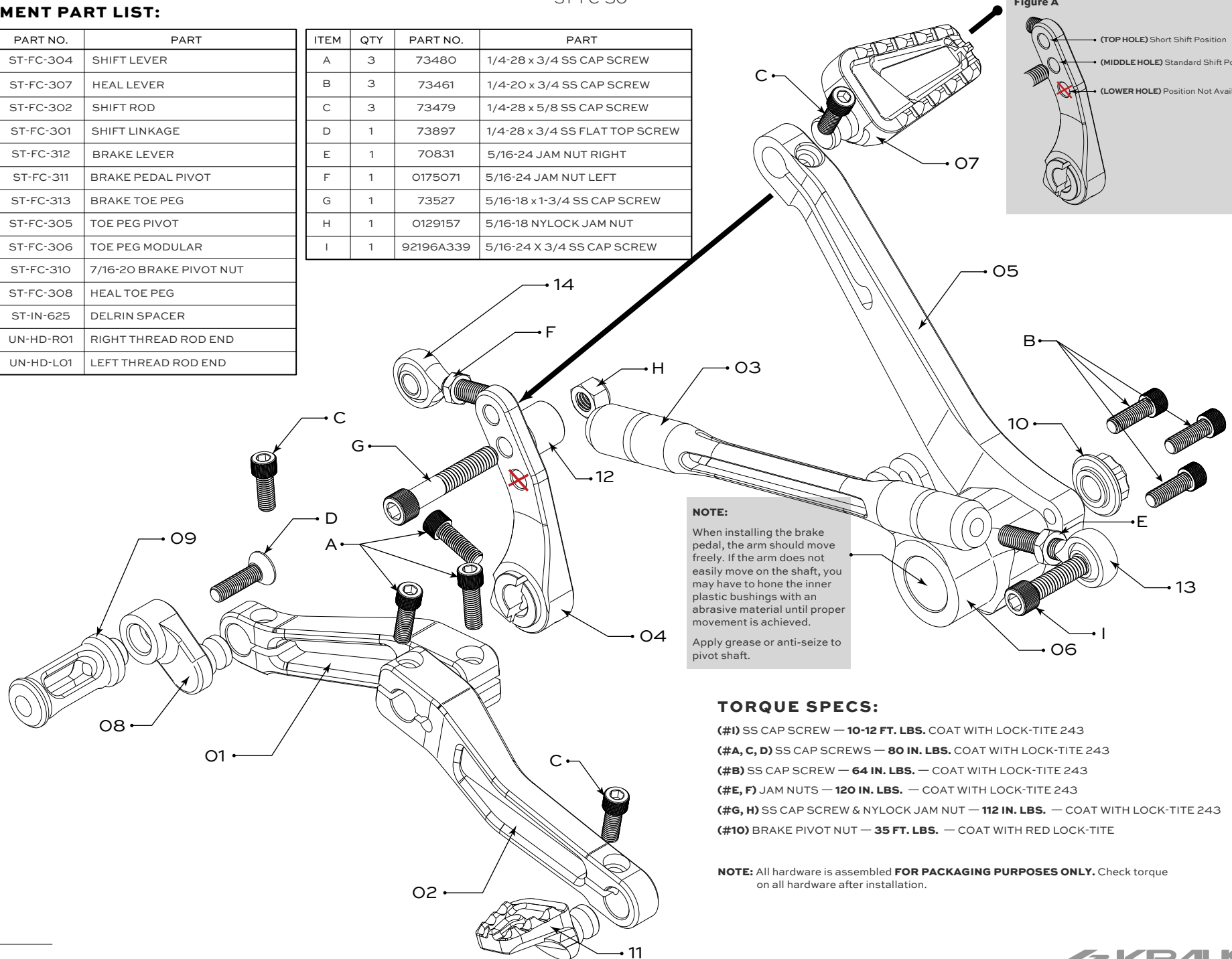
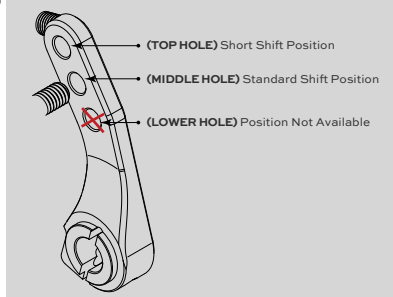
REPLACEMENT PART LIST:

ITEM	QTY	PART NO.	PART
1	1	ST-FC-304	SHIFT LEVER
2	1	ST-FC-307	HEAL LEVER
3	1	ST-FC-302	SHIFT ROD
4	1	ST-FC-301	SHIFT LINKAGE
5	1	ST-FC-312	BRAKE LEVER
6	1	ST-FC-311	BRAKE PEDAL PIVOT
7	1	ST-FC-313	BRAKE TOE PEG
8	1	ST-FC-305	TOE PEG PIVOT
9	1	ST-FC-306	TOE PEG MODULAR
10	1	ST-FC-310	7/16-20 BRAKE PIVOT NUT
11	1	ST-FC-308	HEAL TOE PEG
12	1	ST-IN-625	DELTRIN SPACER
13	1	UN-HD-R01	RIGHT THREAD ROD END
14	1	UN-HD-L01	LEFT THREAD ROD END

ITEM	QTY	PART NO.	PART
A	3	73480	1/4-28 x 3/4 SS CAP SCREW
B	3	73461	1/4-20 x 3/4 SS CAP SCREW
C	3	73479	1/4-28 x 5/8 SS CAP SCREW
D	1	73897	1/4-28 x 3/4 SS FLAT TOP SCREW
E	1	70831	5/16-24 JAM NUT RIGHT
F	1	0175071	5/16-24 JAM NUT LEFT
G	1	73527	5/16-18 x 1-3/4 SS CAP SCREW
H	1	0129157	5/16-18 NYLOCK JAM NUT
I	1	92196A339	5/16-24 X 3/4 SS CAP SCREW

SETTING SHIFT PREFERENCE

Figure A



NOTE:
When installing the brake pedal, the arm should move freely. If the arm does not easily move on the shaft, you may have to hone the inner plastic bushings with an abrasive material until proper movement is achieved.
Apply grease or anti-seize to pivot shaft.

TORQUE SPECS:

- (#I) SS CAP SCREW — **10-12 FT. LBS.** COAT WITH LOCK-TITE 243
- (#A, C, D) SS CAP SCREWS — **80 IN. LBS.** COAT WITH LOCK-TITE 243
- (#B) SS CAP SCREW — **64 IN. LBS.** — COAT WITH LOCK-TITE 243
- (#E, F) JAM NUTS — **120 IN. LBS.** — COAT WITH LOCK-TITE 243
- (#G, H) SS CAP SCREW & NYLOCK JAM NUT — **112 IN. LBS.** — COAT WITH LOCK-TITE 243
- (#10) BRAKE PIVOT NUT — **35 FT. LBS.** — COAT WITH RED LOCK-TITE

NOTE: All hardware is assembled **FOR PACKAGING PURPOSES ONLY.** Check torque on all hardware after installation.